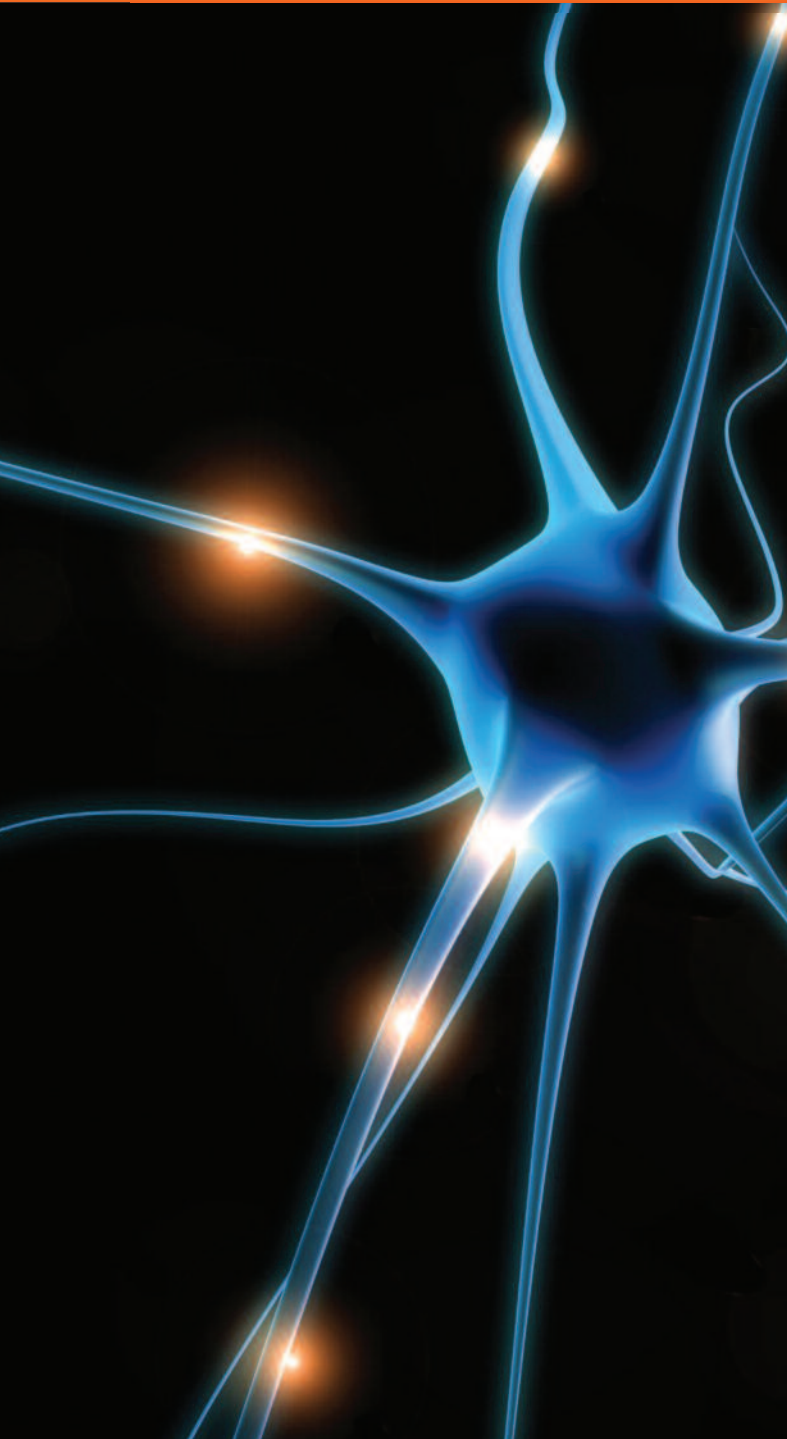


Introducing the NeuroNET

System of Matrix 2 Fan Coils



Matrix 2 is pre set, at the factory, with the following information:-

- Design Air Quantity 'Per Duct'
- Design Maximum Chilled water flow rate
- Design Maximum Heating water flow rate
- Normal set points, proportional bands etc

When a NeuroNET System is installed and activated, the Matrix 2 units:-

- Set their own total air volume
- Balance every duct run
- Control to the defined water flow rates
- Establish intelligent, low energy control

With NeuroNET, commissioning becomes a fine tuning exercise, rather than a setting exercise.

See a fully working demonstration at the Ability Factory.

Please call for details - 01202 851440

Intelligent Solutions From
Ability Projects