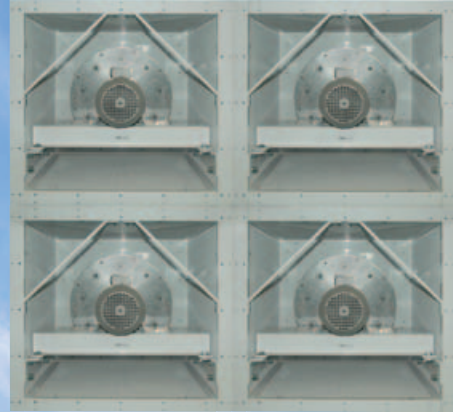


FANWALL[®] retrofits where others can't reach!

FANWALL[®] is a wall of fans which deliver the same airflow as one big fan in a conventional AHU. Because of their modular construction they are able to be moved into smaller restricted spaces without the use of heavy lifting gear, making them ideal for retro-fitting existing AHUs. They are quieter, more energy efficient, deliver a better airflow pattern and reduce the footprint by up to 50%. Maintenance is easier and cheaper and a fully redundant system ensures reliability.



FANWALL[®]
AHU Multi Fan Technology
Specified for Intel Manufacturing

MODUCEL[®]

AHU selection has never been simpler!

- **Easy to Use**
- **Numerous Templates**
- **Printable Drawings**
- **Full Technical Schedule**

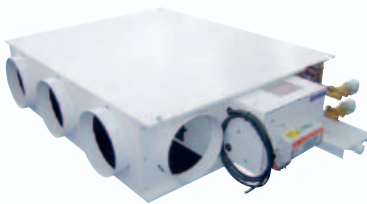
Our new, web based AHU Selection Program, allows you to specify your AHU by using numerous templates and entering your specific requirements for cooling, filtration and humidification. You can then print out a drawing and technical schedule to your bespoke design.

Simply register your details for the Moducel AHU Selection Program at www.eaton-williams.com

LKP Air Handling Units



Fan Coil Units



DRU Data Room Units



IPAC Close Control Units



For further information:

Telephone: 01782 599995 email: info@eaton-williams.com
www.eaton-williams.com

