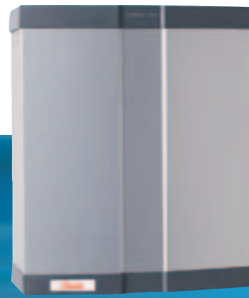
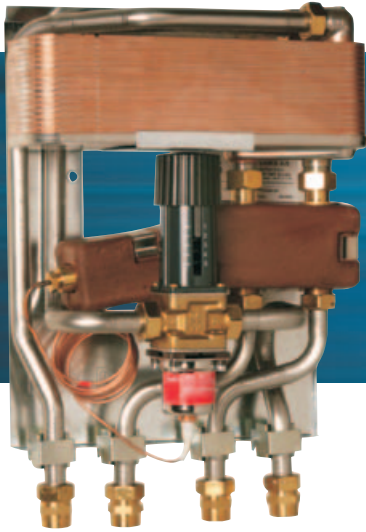


AquaCon™ Direct Modules

Instantaneous Water Heaters



K _{vs}	1.9 / 3.4 m ³ /h
Pressure Rating	PN16
Max Δp primary	10.0 bar
Max. temperature primary	120°C
Min. cold water pressure	0.5 bar
Setting range	20-60°C

DHW: Capacity examples, 10°C / 50°C

Station Type	DHW Capacity kW	Supply Flow Primary °C	Return Flow Primary °C	DHW Tap Load l/min	Pressure Loss Primary* Bar	Flow Rate Primary l/h
Type 1	41	70	19	16.8	0.28	714
	41	80	16	20.9	0.19	570
Type 2	58	70	20.7	21.3	0.34	1050
	58	80	17.3	26.8	0.23	822
Type 3	80	70	19.5	28.6	0.35	1410
	80	80	16.4	33.4	0.25	1116

* Pressure loss without heat meter

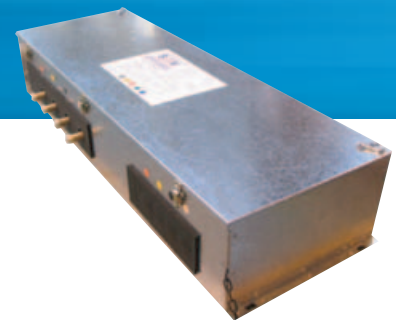
FloCon™ Commissioning Modules

Fan coil and chilled beam headers



Nom. Size	Flow Range (l/s)	Maximum balancing pressure (kPa)	kv	kvs
15 LL	0.014 – 0.028	54200 Q ²	0.473	0.473
15 ML	0.028 – 0.055	54200 Q ²	0.825	0.976
15 SL	0.055 – 0.095	54200 Q ²	0.85	1.799
15 SS	0.095 – 0.12	2366 Q ²	1.911	1.799
20	0.12 – 0.29	1250 Q ²	4.427	4.057
25	0.21 – 0.54	1203 Q ²	7.648	7.452
32	0.46 – 1.12	284 Q ²	16.56	16.628

Equations: $\Delta P(\text{Pa}) = \zeta \rho v^2 / 2$ or $\Delta P(\text{kPa}) = (Q \times 36 / kv)^2$ Where Q = flow kg/s, ρ = density kg/m³, v = velocity m/s



www.sav-systems.com

UK Customer Support Centre

SAV, Scandia House, Boundary Road, Woking, Surrey, GU21 5BX

Tel: +44 (0)1483 771910 Telefax: +44 (0)1483 771519 Email: info@sav-systems.com

